

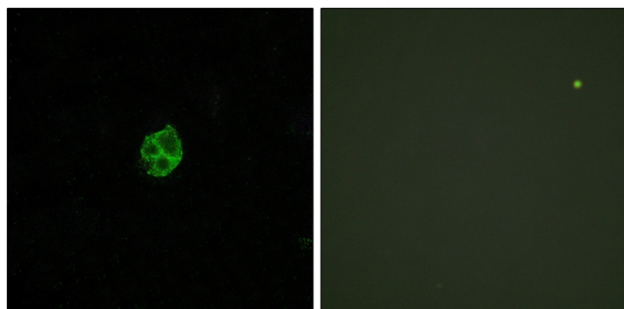


GPR151 Polyclonal Antibody

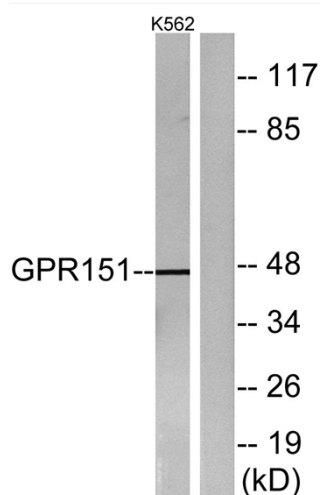
Catalog No	YP-Ab-13309
Isotype	IgG
Reactivity	Human;Mouse;Rat
Applications	WB;IF;ELISA
Gene Name	GPR151
Protein Name	Probable G-protein coupled receptor 151
Immunogen	The antiserum was produced against synthesized peptide derived from human GPR151. AA range:370-419
Specificity	GPR151 Polyclonal Antibody detects endogenous levels of GPR151 protein.
Formulation	Liquid in PBS containing 50% glycerol, 0.5% BSA and 0.02% sodium azide.
Source	Polyclonal, Rabbit,IgG
Purification	The antibody was affinity-purified from rabbit antiserum by affinity-chromatography using epitope-specific immunogen.
Dilution	Western Blot: 1/500 - 1/2000. Immunofluorescence: 1/200 - 1/1000. ELISA: 1/5000. Not yet tested in other applications.
Concentration	1 mg/ml
Purity	≥90%
Storage Stability	-20°C/1 year
Synonyms	GPR151; PGR7; Probable G-protein coupled receptor 151; G-protein coupled receptor PGR7; GPCR-2037
Observed Band	46kD
Cell Pathway	Cell membrane ; Multi-pass membrane protein .
Tissue Specificity	High expression in the spinal cord.
Function	function:Orphan receptor.,similarity:Belongs to the G-protein coupled receptor 1 family.,
Background	function:Orphan receptor.,similarity:Belongs to the G-protein coupled receptor 1 family.,
matters needing attention	Avoid repeated freezing and thawing!
Usage suggestions	This product can be used in immunological reaction related experiments. For more information, please consult technical personnel.



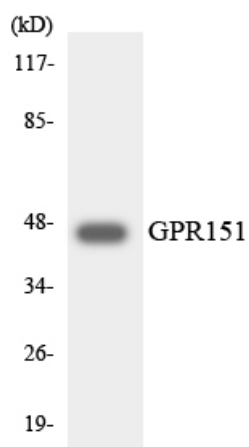
Products Images



Immunofluorescence analysis of HUVEC cells, using GPR151 Antibody. The picture on the right is blocked with the synthesized peptide.



Western blot analysis of lysates from K562 cells, using GPR151 Antibody. The lane on the right is blocked with the synthesized peptide.



Western blot analysis of the lysates from HeLa cells using GPR151 antibody.